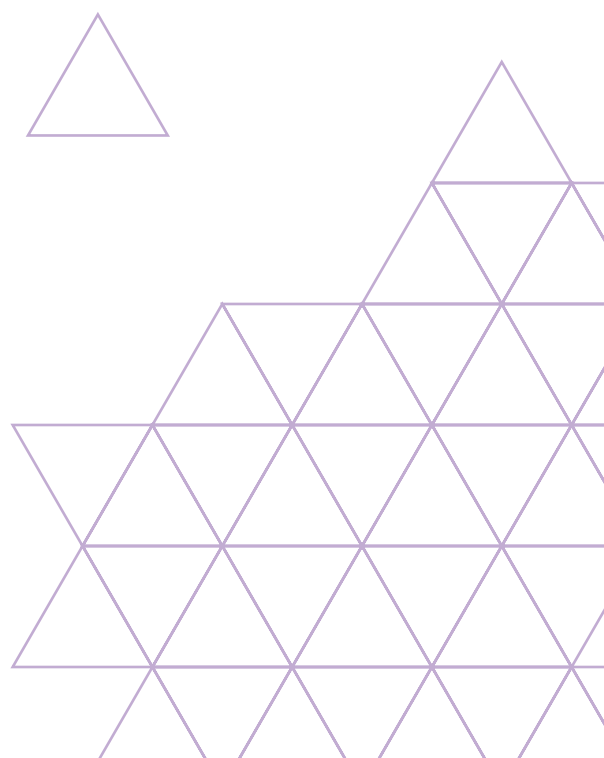
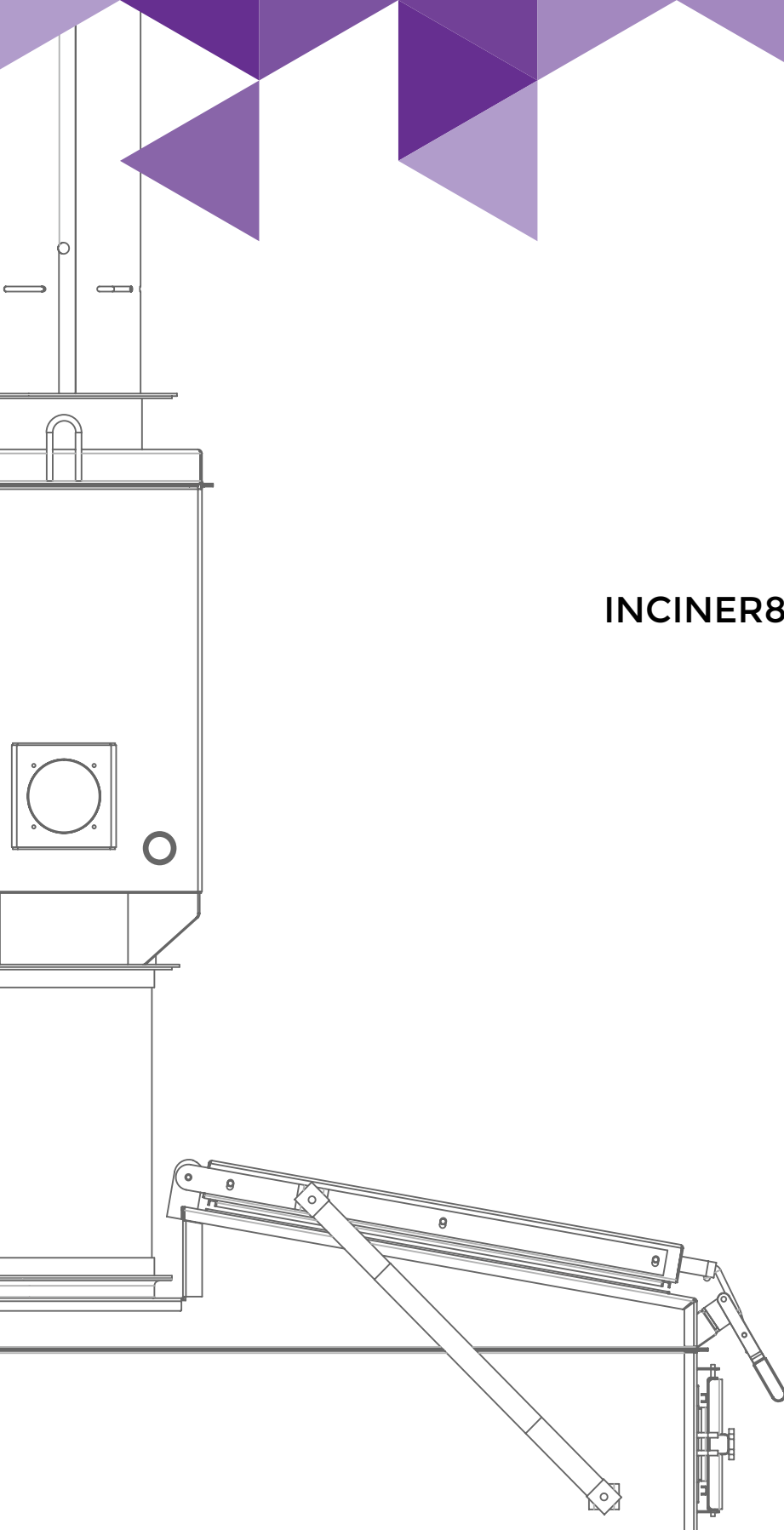




INCINER8

WWW.INCINER8.COM

INCINER8 SIROCCO TECHNICAL DATASHEET



TECHNICAL SPECIFICATION

model: **SIROCCO**

The Sirocco is our smallest and most portable waste incinerator and has been designed to be easy to relocate and use almost anywhere. Requiring just a small amount of electricity to power the fan - no other fuel source is required. The efficient process reduces waste to as little as 3% of its initial volume. It uses cyclonic air technology by using the high-pressure fan to pull air into the main drum to create a high oxygen environment. This creates optimum conditions for complete combustion with impressive burn rates and the added benefit of no smoke or smell.

COMBUSTION CHAMBER

Provides 200lt (0.2m³) capacity to accommodate bulky waste items.
Designed using an ISO standard barrel to allow easy servicing/maintenance.

HEAVY DUTY TROLLEY

The Sirocco is built onto a rugged, powder coated trolley with pneumatic tyres for portability in demanding environments.

FUEL FREE DESIGN

The waste you burn acts as the fuel. Simply load the chamber, ignite the waste and adjust the fan accordingly.

AIR INJECTION FAN

Combustion is aided by a powerful induction fan to optimise the conditions for a perfect burn cycle. Fully configurable.

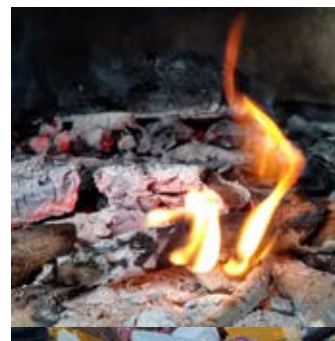


"Photos are for illustration purposes only. Specification (including paint colours) are subject to change without notice and do not affect the performance of the machine."

APPLICATIONS

Our versatile Sirocco is designed for a wide range of waste types. This particular model benefits from a top loading design and very simple operation process. Ideal as a stand-alone machine where limited staff are available to operate.

- General waste
- Animal by-products
- Documents
- Packaging
- Camp waste
- Domestic waste
- Invasive Plants
- Industrial Waste



OPERATIONAL SPEC

Combustion Chamber Volume (m ³)	0.2m ³
Burn Rate (Kg p/h)	Up to 15Kg
Electricity Consumption	0.26 kW/h
Average Ash Residue (%)	3-5%
Electrical Voltage	110v or 230v
Recommended Operational Temperature	>600°C

PHYSICAL SPEC

Assembled L/W/H (mm)	900 x 600 x 1200
Assembled Weight (Kg)	70kg
Door Size (mm)	0.57Ø
Air Fan	Yes
Steel Thickness (mm)	3mm

CONTACT OUR EXPERTS:
+44 (0) 1704 88402 / SALES@INCINER8.COM

For additional information, or to speak to one of our expert team:

Call
+44 (0) 1704 884020

Email
sales@inciner8.com

 **INCINER8**
www.inciner8.com